

Rotary



Club of Mattoon

Thanks to All Who Attended the 2025 Rural-Urban Luncheon!



Thank you to the nearly 200 attendees representing local agriculture, business, education, communication, Rotary and more who attended the 2025 Rural-Urban Luncheon held at Lake Land College on March 19! Thank you to Jeff Nalley, Broadcaster/Journalist at Cromwell Radio AG Radio Network, for sharing his thought-provoking insights and providing an inspiring presentation, *2025: What Now?* Thanks for the generosity of our sponsors for supporting this opportunity to bring community members together! Sponsors: Lake Land College; Rural King; Advanced Ag Services; AgMarket.Net; Sloan Implement; American Prairie Insurance Solutions; Channel: Kris Heller, CCA; Niemeyer Repair Service; Coles County Farm Bureau; Coles-Moultrie Electric Cooperative; The Seed Shed; Primient; Helena; Neal Tire and Auto Service; Seed Life; Sarah Bush Lincoln; Homann Ag Solutions; Great Heart Seed; Farmers Grain of Dorans; First Mid Bank & Trust, Birkey's; Farm Credit Illinois; WMCI 101.3 The Cromwell Group; South Central FS; BASF; Charleston Rotary; Mattoon Rotary.

Club Meeting

Mattoon
Meets at Mattoon Golf
& Country Club
6700 N Country Club
Rd
Mattoon, IL 61938-
8427
Time: Wednesday at
12:00 PM

Speakers

March 22, 2025
[Chicago Comedy All-Stars](#)

March 26, 2025
[Marsha Griffin, Office of the Attorney General: Consumer Fraud Awareness](#)

April 09, 2025
[Recognize MHS Students of the Month](#)

Birthdays

Melissa McDaniel
April 5th
Robert D Becker
April 6th
James R. Livesay II
April 6th
Alex Hagen
April 7th
Mark A. McDaniel
April 15th

Club Leaders



Lindsey
Butler
Youth
Exchange
Counselor



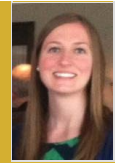
Kimberly A.
Denton
Youth
Exchange
Office



Noah Olson
President



Terry Baker
President -
Elect



Laura Reichart
Club Executive Secretary



Alyssa Nichols
Treasurer



Rick Hall
Club Director



Mike Martin
Club Director



Tina Stovall
Club Admin Chair
Club Service Chair
Past President
Public Relations Chair



Gary L. Swearingen
Club Director



Judy Baker
Membership Chair



Kim Edwards
Sergeant-at-Arms



Scott L. Eggleston
Community Service Chair
Service Projects Chair



Janet Grove
Rotary Foundation Chair
iPast President



Mark A. McDaniel
Youth Services Chair